



MINI- RAPID

MEETS THE HIGHEST DEMANDS
OF HYGIENE AND SAFETY

**ITW**
INDUSTRIETORE

WWW.ITW-TORSYSTEME.DE

PRODUCT DESCRIPTION

CURTAIN

PVC-coated fabric incl. viewing window.
Lateral slide cams for curtain guidance.

GUIDE RAIL

Pre-finished, sturdy, self-supporting aluminium (E6/ EV1 anodised) or stainless steel guide rails with integrated galvanized bearing brackets for the intake of the sufficiently dimensioned flange bearings, the winding-shaft and the fixation of the drive.

SURFACE

Guide rail painted in RAL colour of your choice, anodised, in stainless steel or galvanized.

FITTING

Direct drive frequency controlled motor, drive side either left or right. Emergency opening by emergency hand crank.

DRIVE AND CONTROL SYSTEM

Microprocessor control unit DR2100 with main switch and integrated frequency converter, 230V/50Hz. Display for menu and error display. Including emergency switch and triple push-button integrated in steel control cabinet. Automatic closing with adjustable stay-open time.

ADDITIONAL EQUIPMENT

- Bale and motor cover
- Safety devices: light-barrier, anti-crash-system, blinking- and/or rotating- light
- Pulse-transmitters: push-buttons, key-switch, pull-switch, coding-switch, radar-detectors
- Radio-transmitters (remote-control)
- Induction-loop
- Mechanical and/or electrical locking

SPEED

Opening speed up to 1,8 m/s

Closing speed up to 0,8 m/s

RESISTANCE AGAINST WIND LOADS

Class 0-1

CURTAIN COLORS

RAL 1018 Zinc yellow

RAL 2004 Pure orange

RAL 3002 Carmine red

RAL 5010 Gentian blue

RAL 7038 Agate grey



SCOPE OF APPLICATION



INDUSTRY



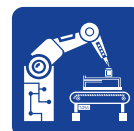
TRANSPORT



LOGISTICS



AUTOMOTIVE



M.PROTECTION



CLEAN ROOM



SUPERMARKET



FOOD



ATEX

PRODUCT FEATURES

DRIVE PANEL (OPTIONAL)

EMERGENCY OPENING
BY MANUAL CRANK

DRIVE WITH FREQUENCY
CONVERTER



CONTROL

DOUBLE PAIR OF SLIDING
CAMS

PVC FABRIC (1-1.5 MM)
IN 5 COLORS OR WITH
VISIBLE WINDOW
AVAILABLE

ROLL COVER
(OPTIONAL)

FLAT STEEL WIND PRESSURE
SAFEGUARDS

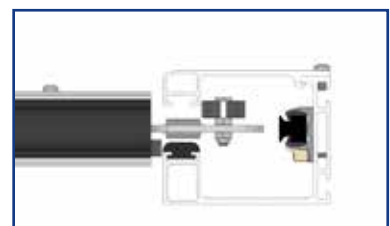
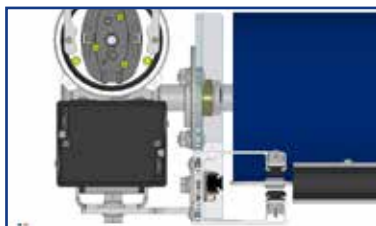
SELF-SUPPORTING
CONSTRUCTION

ALUMINUM RUNNING RAILS
ANODIZED IN E6EV1

SELF-MONITORING,
ELECTRICAL SAFETY
LIGHT CURTAINS

COLLISION PROTECTION
(OPTIONAL)

WEIGHTS IN THE BOTTOM RAIL (OPTIONAL)



THE ADVANTAGES AT A GLANCE:

- Inexpensive, wear-resistant and low-maintenance high-speed door with a small space requirements
- Standard sliderail track made of aluminum E6/EV1
- Standard version up to 5,000 x 5,000 mm
- Curtain 1.0 mm with aluminum cross sections, making it easy to exchange individual sections
- Standard: wind class 0, with wind pressure protection up to wind class 1
- Standard: closing edge monitoring by means of non-contact light curtain (self-monitoring system without annual closing force inspections)
- Numerous optional extensions and versions possible



BRO-MINIRAPID-EN01 | RESERVE TECHNICAL CHANGES

ITW Industrietore GmbH

Adolf-Kolping-Straße 14

73072 Donzdorf

Germany

Fon +49 7162 9129-60

Fax +49 7162 9129-64

info@itw-torsysteme.de

www.itw-torsysteme.de

