





# MINI- RAPID ISO

FULFILLS THE HIGHEST INSULATION  
PERFORMANCE FOR COST SAVINGS AND  
EFFICIENCY

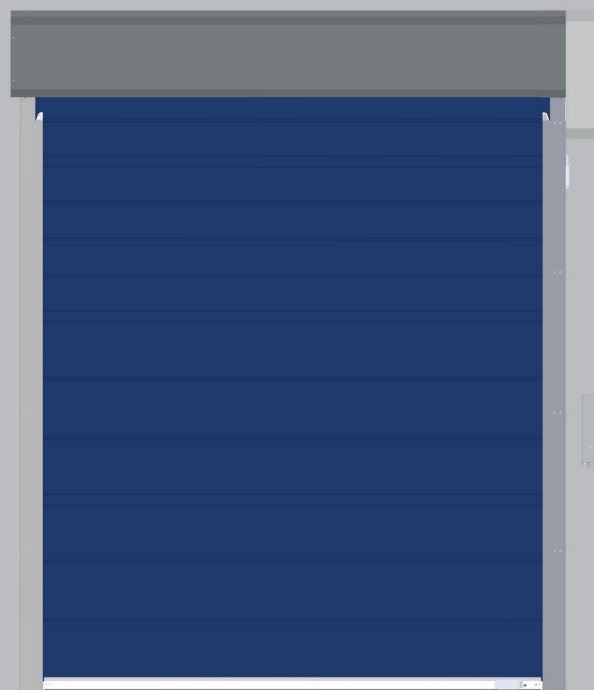




## ADVANTAGES AT A GLANCE

-  Opening speed up to 2.5 m/s
-  Door size up to 4.5 m x 4.5 m
-  Resistance against wind load class 1
-  Heat transfer coefficient  $U \leq 1.6 \text{ W}/(\text{m}^2 \cdot \text{K})$
-  Large selection of colours
-  Double insulating curtain, filled with 20 mm thick PE foam

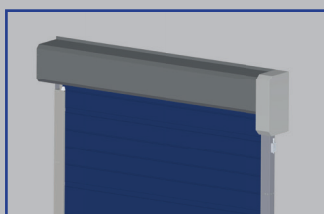
## SPECIAL FEATURES



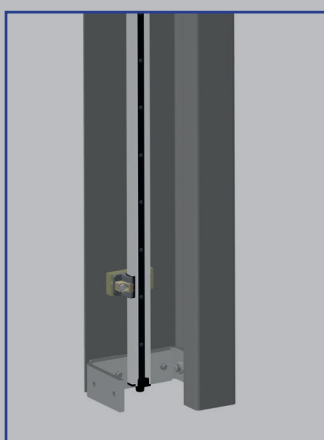
# INSULATING AND EFFICIENT

The MINIRAPID Iso is characterised by its outstanding insulation performance. The curtain pockets are filled with 20 mm thick PE foam, which effectively keeps the cold where it belongs. Thanks to an extremely low heat transfer coefficient of  $U \leq 1.6 \text{ W}/(\text{m}^2 \cdot \text{K})$ , heat loss is minimised and energy costs are noticeably reduced.

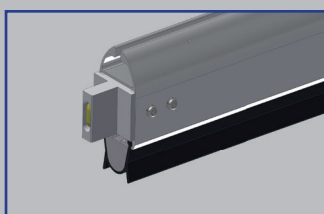
In addition, the curtain is available in a wide range of colours, allowing individual adaptation to aesthetic requirements. The stable and self-supporting construction of the insulated high-speed door requires little lateral space. Simple installation is made possible by a well thought-out modular system, which ensures efficient installation and maintenance.



Bale and drive cover



Light grid



Anti-crash function

## TECHNICAL DATA

- Opening speed up to 2.5 m/s
- Closing speed up to 0.8 m/s
- Resistance to wind load up to class 1
- Door sizes up to 4.5 m high and 4.5 m wide
- DR2100 microprocessor control unit with main switch and integrated frequency inverter
- 230 V/50Hz, IP54 operator
- Required lintel height min. 595 mm
- Curtain available in various colours or fully printed with motifs

## SAFETY

- Access protection by means of all-round cladding
- Passage monitoring by means of contactless light grid
- Anti-crash function - automatic reset (optional)
- Emergency opening by hand crank
- Signal lights and traffic light control (optional)

# OUR FURTHER PRODUCT RANGE

MINIRAPID ISO (E) | 18.03.2026 | TECHNICAL CHANGES RESERVED



**SPIRAL DOORS**



**FOLDING DOORS**



**HORIZONTAL HIGH-SPEED DOORS**



**VERTIKAL HIGH-SPEED DOORS**



**SWING DOORS**



**STRIP CURTAINS**



**MACHINE PROTECTION DOORS**



**SECTIONAL DOORS**



**STEEL / ALUMINIUM ROLLER DOORS**

## SCOPE OF APPLICATION



INDUSTRY



TRANSPORT



LOGISTICS



AUTOMOTIVE



M. PROTECTIONS



CLEAN ROOM



SUPERMARKET



FOOD



COOLING AREA



ATEX

**ITW Industrietore GmbH**  
 Adolf-Kolping-Straße 14  
 73072 Donzdorf  
 Germany

Tel. +49 7162 9129-60  
 Fax +49 7162 9129-64  
 info@itw-torsysteme.de  
 www.itw-industrietore.de

